

Winch & Motor Unit Identification

Winch Date & Version - Motor Serial Number

Product Versions

Refer to the Winch Product Version Number when inquiring or ordering powered Conversion Kits, Service Kits or any regular spare parts. Number located on winch base/stem.



All Andersen Winches

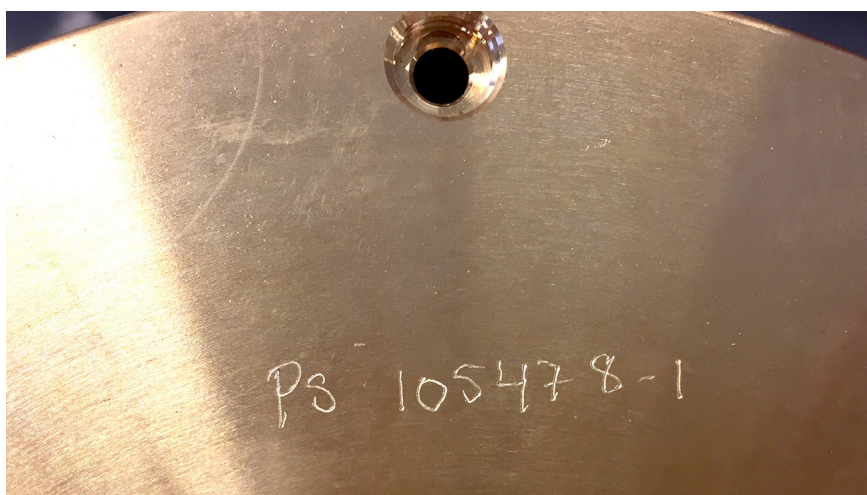
The production year, month and version number [YY-MM-VER] are stamped on the top side of the deck flange, between the mounting bolt holes. This can be found when the winch drum is removed.



E1 Electric & Hydraulic Motor Units

A serial number starting with 'PS' is stamped on the top flange of the gearbox housing.

Note: On very old winches, a similar stamp was placed on the bottom side of the flange.



Compact Motor™ Units

A serial number starting with the letters 'PS' is engraved on the bottom of the motor unit.